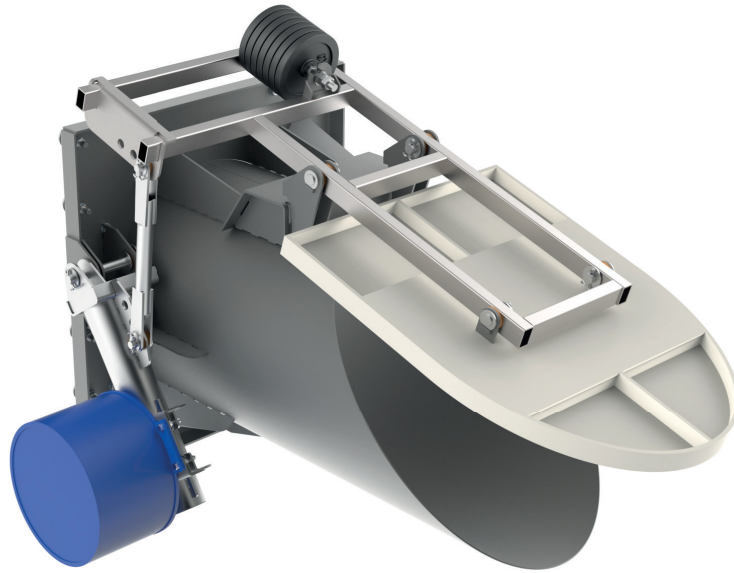


RSK/P-Flap Valve



PRODUCT DESCRIPTION

Floater-supported RSK/P-Flap Valves reliably protect against backwater and flooding. Using adjustable weighted lever mechanics in combination with a floater, opening and closing times can be precisely set. The flap gates are available in nominal widths DN 250 to DN 2500 in both rectangular and circular formats.

YOUR ADVANTAGES

- Safe opening and closing
- Level control using floaters
- Round and rectangular versions
- Large nominal widths series

USE

- Sewage systems
- Outlets/overflows
- Storm water tank
- Separating structures

